



TS 79
Door closer

The inexpensive compact quality solution for standard doors assured

With the TS 79, dormakaba has developed a door closer that rounds off its ClassicLine series perfectly. The ease and speed with which it can be fixed, the fact that its spring strength can be so easily adapted to the door size – by simply turning round the closer arms power shoe and changes in template position allows an easy selection of the closing force to suit various door sizes. Its competitive price should make it the ideal choice for your application.

Certified to ISO 9001

Benefits

For the trade

- Increased stocking flexibility thanks to the standard ClassicLine series arm.
- Complements the ClassicLine series as a competitive model for standard doors.

For the installer/fabricator

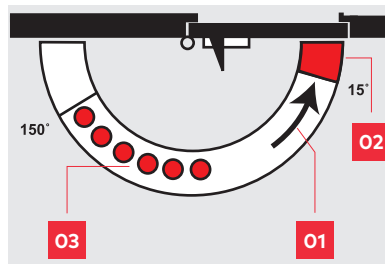
- Non-handed design.
- Easy and quick to fix.

For the architect/specifier

- Competitive and reliable.
- Compact construction combined with classic design.

For the user

- Constant closing action virtually unaffected by temperature fluctuations.
- Optimum closing speed adjustment with two regulating valves
- Reliable closing with adjustable latching action.



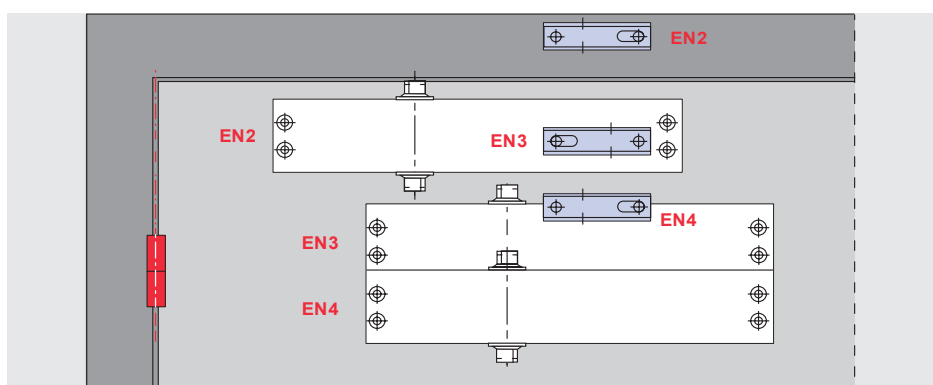
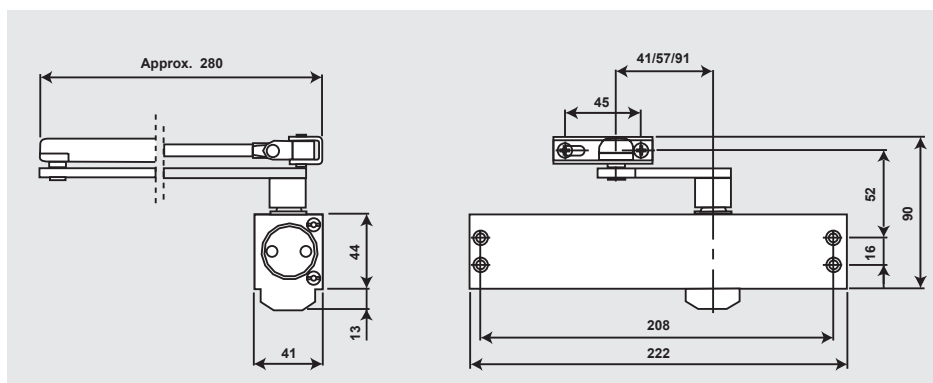
- 01** Closing speed adjustable in the range 180° – 15°
- 02** Closing speed adjustable in the range 15° – 0°.
- 03** Hold-open range for model with hold-open arm model (optional extra).

| Door width | Size setting |
|------------|--------------|
| ≤ 850 mm | EN 2 |
| ≤ 950 mm | EN 3 |
| ≤ 1100 mm | EN 4 |

The TS 79's size setting is selected for the door width by moving the closer body and/or turning the arm power shoe.

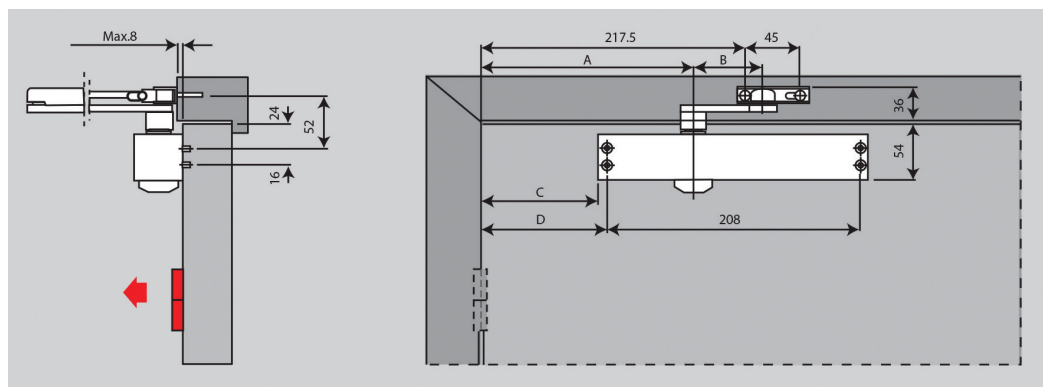
| Data and features | | TS 79 |
|--|--------------------------------------|-----------------|
| Spring strength (adjustable by size by power shoe and templating position) | Size | EN 2/3/4 |
| Standard doors | ≤ 1100 mm | ● |
| External doors, outward opening | | ● |
| Fire doors | | ● |
| Non-handed | | ● |
| Arm type standard scissor arm | | ● |
| Parallel arm bracket included | | ● |
| Closing speed adjustable at 2 separate valves | 180° – 15° 15° – 0° | ● |
| Backcheck | | ● |
| Delayed action | | – |
| Hold-open | | ○ |
| Weight in kg | | 1.7 |
| Dimensions in mm | Length Overall Depth Height | 222 41 44 |
| Approved to AS1905 Part 1 Fire Resistant Doors (Backcheck model only) | | ● |

● yes – no ○ option



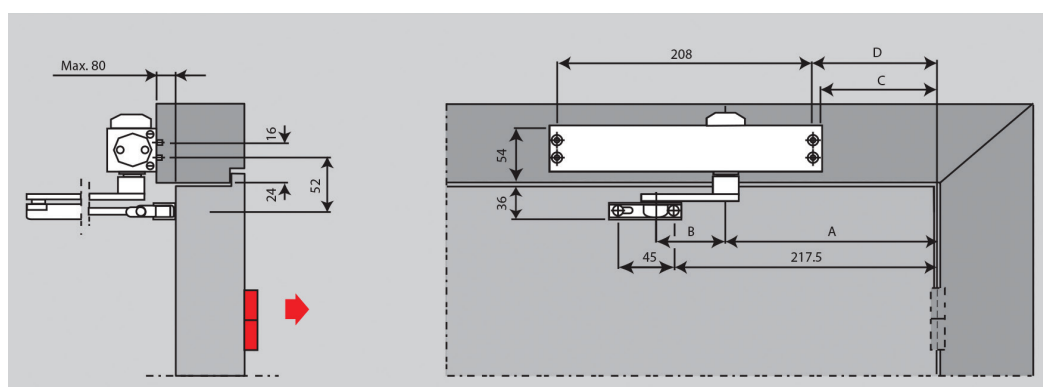
Door leaf fixing, pull-side

| | EN 2 | EN 3 | EN 4 |
|---|------|------|------|
| A | 141 | 191 | 191 |
| B | 91 | 57 | 41 |
| C | 62 | 112 | 112 |
| D | 70 | 120 | 120 |



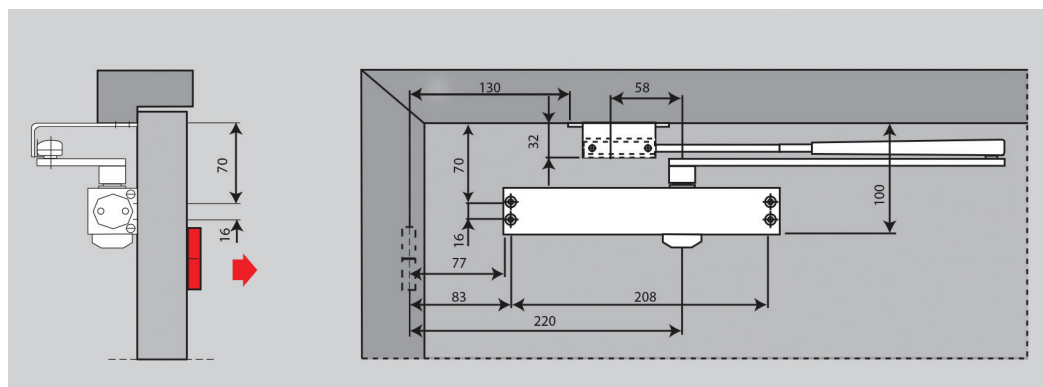
Transom fix (overhead frame installation), push side

| | EN 2 | EN 3 | EN 4 |
|---|------|------|------|
| A | 141 | 191 | 191 |
| B | 91 | 57 | 41 |
| C | 62 | 112 | 112 |
| D | 70 | 120 | 120 |



Parallel arm fixing, push side

With this fixing method, the closing force is approx. 20NM (for doors up to 950mm).



Standard equipment

Order No.

- = Closer body and arm
- = Arm assembly separate
- △ = Accessory

Colour

Silver
Special colour
Black P190

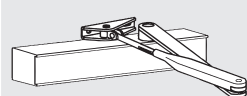
xx

01

09

19

Closer body with arm

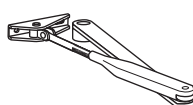


Size EN 2 / 3 / 4

223157xx Std arm

9400000004997 H/O
Silver

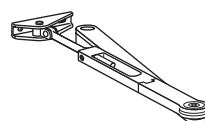
Standard arm



■ 220023xx



Hold-open arm



■ 220025xx



Parallel arm bracket



△ 280066xx



**Door
Hardware**



**Electronic
Access & Data**



**Lodging
Systems**



Safe Locks



**Entrance
Systems**



**Interior Glass
Systems**



**Mechanical
Key Systems**



Services

dormakaba Australia

Head Office
12-13 Dansu Court
Hallam VIC 3803
T 1800 675 411
info.au@dormakaba.com
www.dormakaba.com.au

dormakaba New Zealand

Head Office
Building P, 61-69 Patiki Road
Avondale, Auckland 1026
T: 0800 436 762
info.nz@dormakaba.com
www.dormakaba.co.nz